

GRADE 1 NEWSLETTER

MS.Hafizi- MS.Asadolah



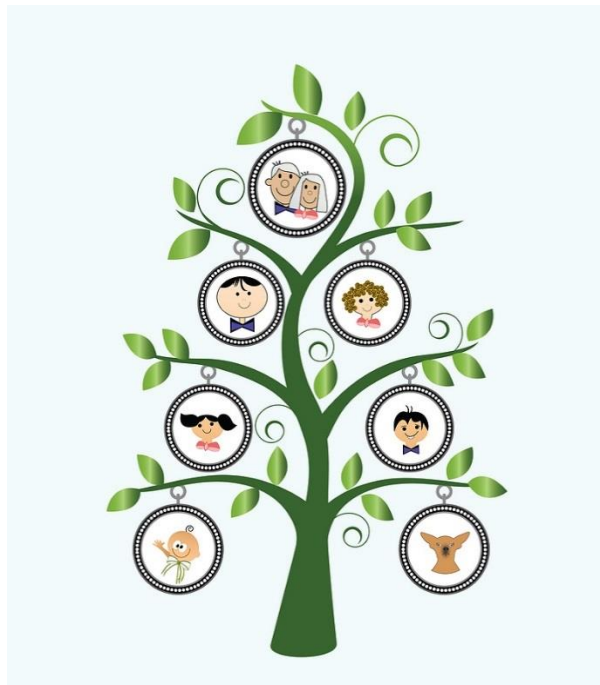
Unit 2: Where we are in place and time

Central Idea: People have responsibilities in their families and friendships.

In this unit we completed the following:

U.O.I

- 1- Similarities and differences between families and friends.
- 2- Different types of families and friends.
- 3- People's responsibilities towards each other.



MATH

- Problem solving by drawing pictures, using information to predict and solve.
- Using counters to add
- Subtraction concept by finding missing parts of numbers through 10
- Finding ways to show 10, 11, and 12
- Identify numbers as odd and even
- Count and compare groups through 12
- Express 11 and 12 as 10 and 1 or 2 more
- exploring the meaning of addition
- Writing addition sentence-Introducing + (plus) and = (equal) symbols -Finding sums for addition facts in horizontal and vertical formats.



LA

- Reading practice from reading spectrum and star fall
- Spectrum and star fall new vocabulary
- Simple sentence making
- Handwriting practice
- Noun/Adjective and verbs recognition in sentences
- Rhyming words
- Common nouns
- Proper nouns
- Singular and Plural nouns
- Concept of a sentence

